

# iWatch

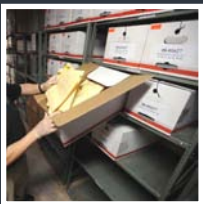
Sensor Management Group, LLC

**Protect degradable, organic, and other evidence from refrigeration failures in your evidence room or crime lab.**



*Sensor Management's wireless monitoring solution provides 24x7 monitoring of your refrigeration units.*

*Historic temperature compliance records are secure, easily accessible, and can be used in court to prove that perishable evidence was properly maintained.*



*Monitor Temperature and/or Humidity Wirelessly and Continuously*

- *via cell phone*
- *via e-mail*
- *via the web*



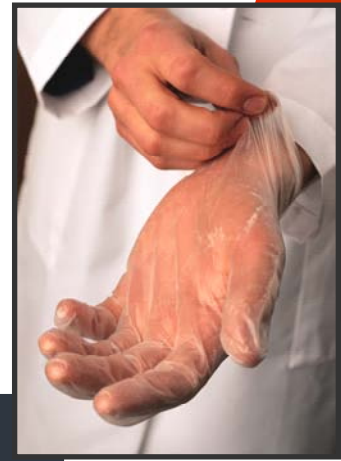
**SMG's iWatch™ is a wireless sensor application that also alerts you if temperature and/or humidity conditions deviate from programmed setpoints 24x7.**

Crime Labs and Evidence Rooms



## The iWATCH™ Monitoring Solution

As an SMG customer and iWatch™ subscriber, temperature and humidity readings of your evidence or crime lab refrigerators are never more than a computer and Internet connection away. There is no software to install. Simply point your web browser to the iWatch™ URL, log in, then review current and archived data.



**Sensor Management Group's complete and scalable monitoring solution can be implemented quickly and inexpensively.**

### Wireless Network Specifications

Item	Description
Security	None, WEP 128, WPA-PSK, WPA2-PSK, and WPA/WPA2-PSK mixed mode
Range	900 feet (68 mw radio) (open field)
Signal Strength	Greater than -63dbm (recommended)
DHCP	DHCP caching, holding the lease until the IP address is no longer valid

### Sensor Specifications

Item	Description
Battery Type	Off-the-shelf, 1.5v L91 AA Batteries (2)
Battery Life	>14 months (w/ 10 min transmit rate)
Temperature Range(s)	-50C to 125C (standard probe) -200C to 125C (extended range probe) -50C to 125C (thermobuffer probe)
Sampling Rate	Inputs sampled every 15 seconds
Transmit Rate	4 to 120 minutes (typical = 10 min)
Agency Compliances	FCC, CE and IC Compliant
Transmission	UDP data packet to a specified URL and port
Packet Size	73 bytes

### Key Solution Benefits:

- Relocate Sensors Easily
- Cell Phone Text Alerts
- 24x7 Solution
- Very Small Footprint
- No Software to Install
- Web Access and E-mail Alerts
- 802.11 Wi-Fi Wireless Monitoring
- Secure Access and Data Archives
- No Power Cords or Network Cables to Run

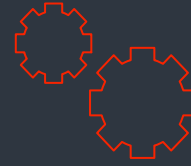
### The iWatch™ Solution

- Monitor temperature
- Create customized alert limits
- Alarm alerts 24x7
- Check status from your web browser
- E-mail and text alerts
- Readings every 10 minutes
- Analyze report data for unusual temperature cycling to predict potential equipment failures and refrigeration inefficiencies.



**SMG's iWatch™ software solution receives, analyzes, actions, reports, and archives sensor data 24x7.**

**Don't let after-hours refrigeration malfunctions destroy your perishable lab work or degradable crime scene evidence. SMG's portable iWatch solution is on duty 24x7.**



## THE TECHNOLOGY

SMG's solution uses IEEE 802.11 wireless communications, wireless (battery-powered) sensors, your compatible wireless network, and the internet. The solution also takes advantage of wireless text message alerts delivered directly to your cell phone to provide "go anywhere" wireless monitoring.



## THE SOLUTION

For peace-of-mind, simply:

- Configure your sensor(s).
- Verify Wi-Fi communications
- Add the sensor(s) to any Wi-Fi-served zones to be monitored.
- From your browser, login to [www.intellisensordata.com](http://www.intellisensordata.com).
- Set your preferences.
- Check conditions.
- Use archived data reports to validate proper evidence storage and to predict equipment failures.



## CUSTOM DESIGNS

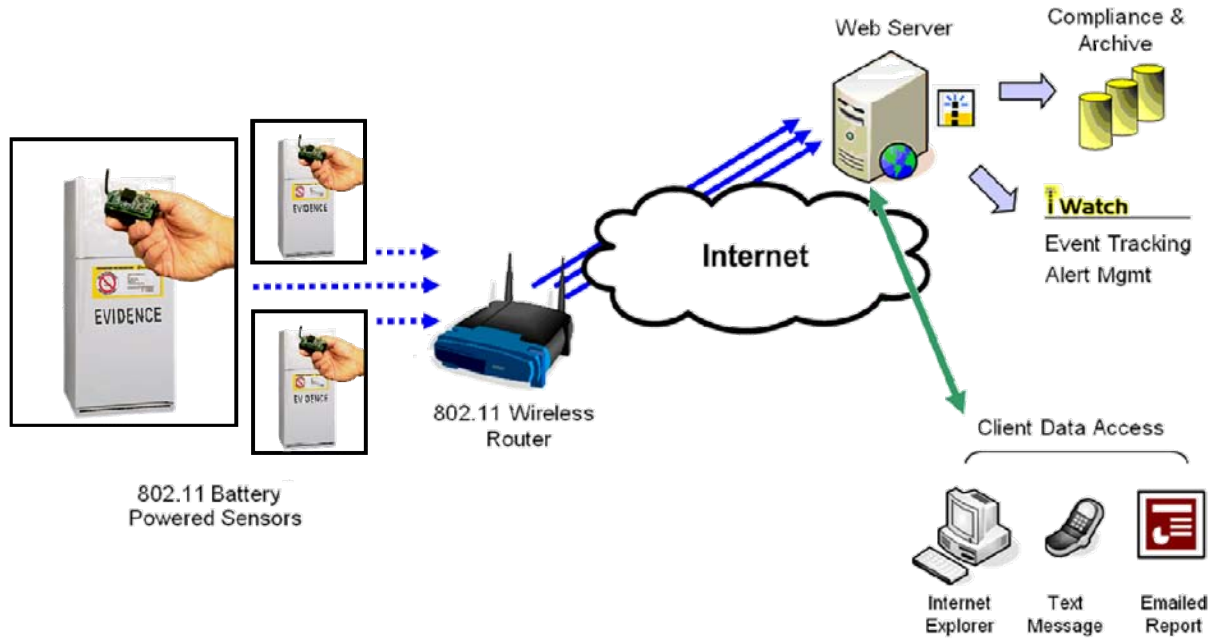
Have a unique situation? Don't have an existing Wi-Fi network? Already have wireless sensors, but no intelligent "front end"? Not sure if your wireless network is compatible? Contact us at [info@sensormgmt.com](mailto:info@sensormgmt.com).



**iWatch™ is a 24x7 automated solution.**

- **Sensor status anytime via the internet**
- **Easily scalable solution**
- **Alerts for out-of-range conditions**
- **Access to historic data to validate proper evidence storage**

Typical architecture diagram of an iWatch™ temperature and humidity monitoring solution using wireless sensors, the existing wireless Wi-Fi network, existing internet technology for remote monitoring, and e-mail and cell phone text messaging technologies to issue out-of-range alerts 24x7.



SMG's iWatch™ system can **automatically notify you** via text message or e-mail **anytime** programmable humidity and/or temperature thresholds are exceeded. Remotely (and securely) monitor the environmental conditions of the evidence refrigerators in your crime lab or evidence room from any web-enabled browser.

**iWatch**  
From Sensor Management

You are logged in as: User  
[Sign Out](#)

*iWatch Dashboard*

File Setup Admin Tools Help ~This page automatically refreshes every 60 seconds.

---

Summary

Report Title: **Acme Police Dept – Evidence Room**  
Wednesday March 10, 2010 02:13 AM EDT

Out-of-Range Alarm Conditions

Rolling 24-Hour Averages

Rolling 24 hour average

Node	Location	Alarm	Reading Type	Reading	Last Update	Min	Max	Avg	Actions
1	Evidence Refrigerator #1		Temp	41.6 F	03/10/10 2:12 AM EDT	38.2 F	45.5 F	42.2 F	
2	Evidence Refrigerator #1	✓	Humidity	65.6%	03/10/10 2:12 AM EDT	39.7%	65.6%	51.8%	

⏪ ⏩ ⏴ ⏵

Copyright 2010 Sensor Management Group, LLC